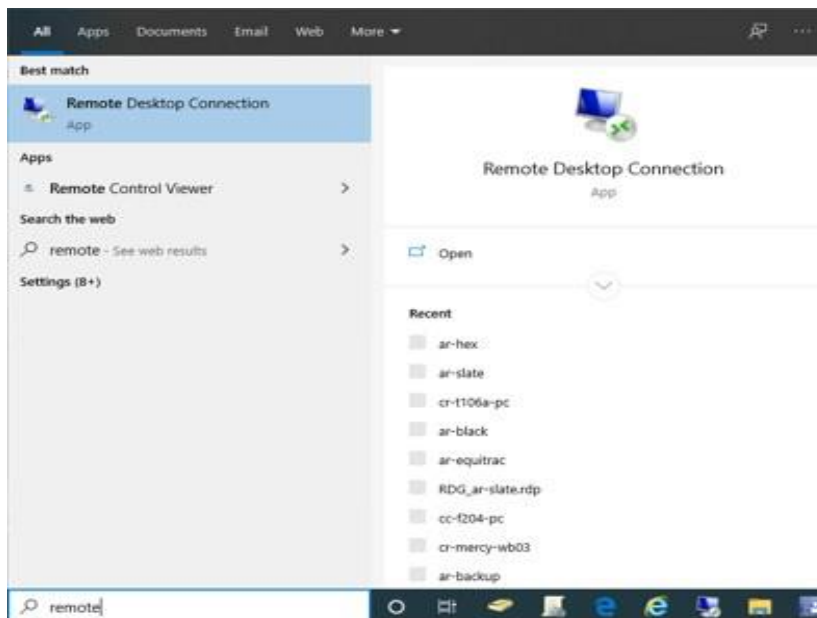


# ATC-ARCC RDS Gateway Instructions

## Instructions for Windows-based Laptop/Desktop:

1. Start a Remote Desktop Connection session



2. Configure Session settings
  - a. On the Advanced tab, select "Settings"



# ATC-ARCC RDS Gateway Instructions

Update the RD Gateway server settings with the following information

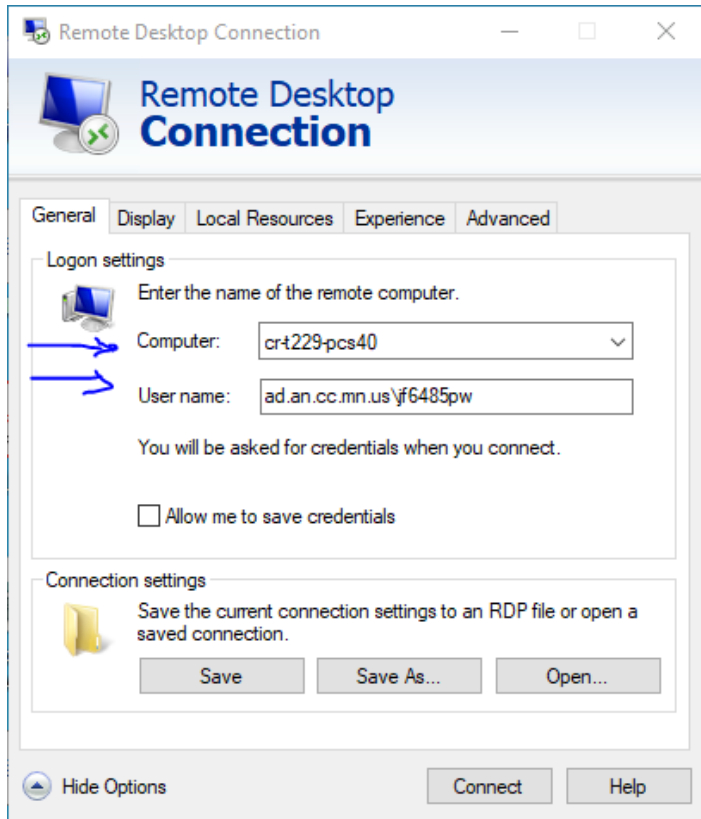
- i. Check the “Use these RD Gateway server settings”
  1. Enter Server name
    - a. **ATC = ark.anokatech.edu**
    - b. **ARCC = ark.anokaramsey.edu**
- ii. Un-Check the “Bypass RD Gateway server for local addresses”
- iii. Check the “Use my RD Gateway credentials for the remote computer”

Click “OK” when complete



# ATC-ARCC RDS Gateway Instructions

- a. On the General Tab, enter the following:
  - i. Computer Name (will be provided by Instructor)
  - ii. User Name (Include “ad.an.cc.mn.us\” in front of your StarID)



3. Save the Session
  - a. Select “Save As” and save the configured session to your desktop